

WRX1000H Handheld Singlemode OTDR

Singlemode 1310, 1550, 1610, 1625, 1650

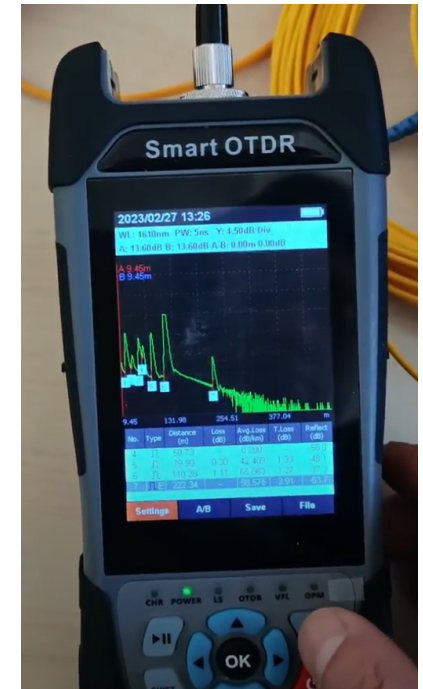
The WRX1000H series handheld optical time domain reflectometer (OTDR) accurately measures the fiber length, splice loss, and location of fiber faults. It adopts a 3.5 inch capacitive touch screen and integrates multiple functions including OTDR, event map, OPM, LS, VFL, RJ45 Sequence Test, optical loss test, and flashlight. The operation is simple and efficient with touchscreen single parameter setting and intelligent measurement. The WRX1000H has a dynamic range of 24dB, an event dead zone of less than 2.5m, and an attenuation dead zone of less than 8.0m providing accuracy and reliability in the field and with a high sampling rate of 128k, it can detect defects as small as 1 meter. The WRX1000H supports an external USB storage device and can store up to 1000 test curves. It is also equipped with a 4000mAh high density polymer lithium battery with intelligent power saving management providing up to ten hours of testing time and up to twenty hours of standby time. Using the filter model, it can support online testing with a maximum online power of -2dB.

The WRX3000 series is used to measure the length, loss, and connection quality of optical fiber used in engineering construction, line maintenance & testing, emergency repair, and the development and production of optical fiber cables.



Features

- 3.5" capacitive touch screen zoom in and out curve
- 2.5m Event Dead Zone
- Maximum dynamic range 24 dB and high sampling rate of 128k allows it to detect defects as small as 1 meter
- Supports an external USB storage device and can store up to 1000 test curves
- Supports Single Mode 1310/1550nm, 1310nm, 1550nm, 1610nm, 1625nm, and 1650nm wavelengths
- Multiple functions including OTDR, Event Map, OPM, LS, VFL, RJ45 Sequence Test, Optical Loss Test, Flashlight
- 4000mAh lithium battery, ten hours of testing
- Ports include Type C USB interface, OTDR/LS interface, VFL interface, OPM interface, RJ45 Line Sequence interface
- High resolution color LCD display allows for easy and accurate viewing of test results
- Automatic analysis of results



Ports



RJ45 Line Sequence



VFL OTDR/LS OPM



Type C USB

Specifications

WRX3000-X	D	S1	S2	S3	S4	S5
Fiber Type	G.652 SM, G.657 SM					
Wavelength (nm)	1310/1550± 20nm	1310± 20nm	1550± 20nm	1610± 20nm	1625± 20nm	1650± 20nm
Maximum Dynamic Range (dB)	24/22dB	24dB	22dB	22dB	22dB	22dB
Event Blind Zone	2.5m					
Attenuation Blind Zone	8m					
Test Range	100m/500m/1km/2km/5km/10km/20km/40km/60km/80km					
Pulse Width	5ns/10ns/20ns/50ns/100ns/200ns/500ns/1 μ s/2 μ s/5 μ s/10 μ s/20 μ s					
Range Accuracy	$\pm (1m + \text{sampling interval} + 0.005 \times \text{Test Distance})$					
Loss Accuracy	$\leq 0.05 \text{ db/db}$					
Sample Points	Maximum 64000					
Sample Resolution	25cm~8m					
Reflection Accuracy	$\pm 3\text{dB}$					
Loss Resolution	0.001dB					
Loss Threshold	0.20dB					
File Format	SOR Standard File Format					
Loss Analysis	4-point method / 5-point method					
Laser Safety Level	Class II					
Refresh Rate	3 Hz (Typical)					
Memory	>1000 Curves, Support External SD					
Connector	FC/UPC (interchangeable with SC and ST)					
Data Interface	USBType-C port					

OPTICAL POWER METER	
Wavelength Range	800 nm~1700 nm
Connector	Universal FC/SC/ST
Test Scope	-50dBm~+26dBm/-70dBm~+10dBm
Uncertainty	± 5%
Calibration Wavelength	850nm/980nm/1300nm/1310nm/1490nm/1550nm/1625nm/1650nm
LASER SOURCE	
Laser Type	FP-LD
Wavelength	Consistent with OTDR Output wavelength
Output Power	≥ -5 dBm (SM Fiber)
Mode	CW/270Hz/1kHz/2kHz
Stability	CW, ± 0.5 dB/15 Min (Test after 15 minutes of preheating)
Connector	FC/UPC (interchangeable with SC and ST)
VISUAL FAULT INDICATOR (VFL)	
Wavelength	650nm± 20nm
Output Power	≥ 10 dBm
Mode	CW/1Hz/2Hz
Connector	FC/UPC (interchangeable with SC and ST)
RJ45 CABLE TRACKER	
Mode	Digital tracking
Distance	≥ 300km
Line Pair Tracking	Support
Connector	FC/UPC (interchangeable with SC and ST)
GENERAL PARAMETERS	
Display	3.5 inches color LCD plus touch screen resolution - 800x480 IPS TFT
Power Supply	USB Type-C adapter: Input: 100V~240V, 50/60 Hz, Output 5V/3A, 9V/2A/12V/1.5A Lithium battery - 3.7V, 4000mAh; 10 hours live testing

Working Temperature	-10°C ~ +50°C
Storage Temperature	-40°C ~ +70°C
Relative Humidity	0~95%, (No Condensation)
Weight	.25kg
Size	170mmx120mmx30mm
Functions of Host: OTDR/Event Map/OPM/LS/VFL/RJ45 cable tracker, line finder, cable sequence, cable length, end face detection/flashlight/optical loss test	

Ordering Information

Model	Wavelength	Dynamic Range	Included in Package
WRX1000H-D	1310/1550nm	24dB/22dB	Host OTDR (battery included) Power Adapter
WRX1000H-S1	1310nm	24dB	SC Adapter
WRX1000H-S2	1550nm	22dB	USB cable
WRX1000H-S3	1610nm	22dB	Quick Guide
WRX3000H-S4	1625nm	22dB	User's manual
WRX3000H-S5	1650nm	22dB	Calibration certificate
			Warranty card
			Instrument soft case

